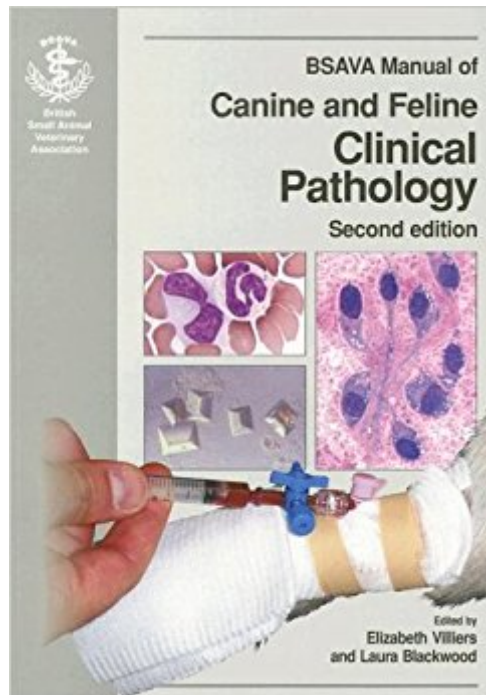




**Ebook Directory**  
the best source of ebook

The book was found

# BSAVA Manual Of Canine And Feline Clinical Pathology



## Synopsis

Clinical Pathology forms the cornerstone of veterinary internal medicine. This second edition of the BSAVA Manual of Canine and Feline clinical Pathology builds on the strengths of the first edition and incorporates new information. It answers essential questions for busy clinicians in general practice: ? Which tests should be done? ? How should they be carried out? ? How do I get the best samples? ? How should I interpret the results? Biochemical tests are discussed in a clinical setting. Individual chapters feature important body systems or organs that have particular clinicopathological profiles (renal, hepatic, gastrointestinal, pancreatic and skin), while separate chapters cover proteins and electrolytes. Blood gas analysis and urinalysis are also discussed in detail in dedicated chapters. Clinical case examples illustrate how test selection and interpretation are used in real cases, and give readers the opportunity to apply for themselves the information presented in the chapters. Clinical case examples illustrate how test selection and interpretation are used in real cases, and give readers the opportunity to apply for themselves the information presented in the chapters. Cytology is a vital and growing part of clinical pathology, and a large chapter reviews both sampling and interpretation. Chapters on body cavity effusions, CSF analysis, joint and muscle disease, and skin disorders include both biochemical and cytological information. The role of clinical pathology in the diagnosis of infectious diseases is also summarized, with helpful explanations of PCR and MIC. Quick reference appendices summarize the samples required for common tests and list differential diagnoses for many of the abnormalities discussed in detail elsewhere in the book. A major feature of the book are the amazing colour photos which enable the reader to identify normal and abnormal blood cells and cytological changes in a range of conditions. As a team of one clinical pathologists and one clinician, the Editors have created a truly useful manual for clinicians, budding clinical pathologists and veterinary students.

## Book Information

Paperback: 464 pages

Publisher: BSAVA; 2 edition (March 26, 2007)

Language: English

ISBN-10: 090521479X

ISBN-13: 978-0905214795

Product Dimensions: 8.4 x 0.9 x 11.8 inches

Shipping Weight: 3.3 pounds (View shipping rates and policies)

Average Customer Review: Be the first to review this item

Best Sellers Rank: #3,357,490 in Books (See Top 100 in Books) #69 in Books > Medical Books > Veterinary Medicine > Pathology #501 in Books > Textbooks > Medicine & Health Sciences > Veterinary Medicine > Small Animal #975 in Books > Medical Books > Veterinary Medicine > Small Animal Medicine

## Customer Reviews

"This text certainly fulfills the stated objective and is appropriate not only for the target audience of general practitioners, but also for professional students and residents. It is well organized and succinct, yet appropriately detailed and thoroughly referenced. The appendices, particularly the appendix on differentials for specific laboratory abnormalities, are valuable and add to the utility of this text." (American Clinical Pathology, 2011)

Clinical Pathology forms the cornerstone of veterinary internal medicine. This second edition of the BSAVA Manual of Canine and Feline Clinical Pathology builds on the strengths of the first edition and incorporates new information. It answers essential questions for busy clinicians in general practice. Biochemical tests are discussed in a clinical setting. Clinical case examples illustrate how test selection and interpretation are used in real cases, and give readers the opportunity to apply for themselves the information presented in the chapters. As a team of one clinical pathologist and one clinician, the Editors have created a truly useful manual for clinicians, budding clinical pathologists and veterinary students.

[Download to continue reading...](#)

BSAVA Manual of Canine and Feline Clinical Pathology (BSAVA British Small Animal Veterinary Association) BSAVA Manual of Canine and Feline Wound Management and Reconstruction (BSAVA British Small Animal Veterinary Association) BSAVA Manual of Canine and Feline Oncology (BSAVA British Small Animal Veterinary Association) BSAVA Manual of Canine and Feline Musculoskeletal Imaging (BSAVA British Small Animal Veterinary Association) BSAVA Manual of Canine and Feline Abdominal Surgery (BSAVA British Small Animal Veterinary Association) BSAVA Manual of Canine and Feline Clinical Pathology BSAVA Manual of Canine and Feline Nephrology and Urology BSAVA Manual of Canine and Feline Reproduction and Neonatology BSAVA Manual of Canine and Feline Dentistry BSAVA Manual of Canine and Feline Gastroenterology BSAVA Manual of Canine and Feline Advanced Veterinary Nursing BSAVA Manual of Canine and Feline Oncology BSAVA Manual of Canine and Feline Musculoskeletal Imaging BSAVA Manual of Canine and Feline Thoracic Imaging BSAVA Manual of Small Animal

Dentistry (BSAVA British Small Animal Veterinary Association) BSAVA Manual of Exotic Pets (BSAVA British Small Animal Veterinary Association) BSAVA Small Animal Formulary (BSAVA British Small Animal Veterinary Association) BSAVA Textbook of Veterinary Nursing (BSAVA British Small Animal Veterinary Association) Textbook of Canine and Feline Cardiology: Principles and Clinical Practice Blackwell's Five-Minute Veterinary Consult Clinical Companion: Canine and Feline Infectious Diseases and Parasitology

[Contact Us](#)

[DMCA](#)

[Privacy](#)

[FAQ & Help](#)